

Weekly Newsletter 11th October 2019



Horn Park
PRIMARY SCHOOL

Dear Parents and Carers,

What a busy week it has been for us at Horn Park once again. The children all continue to make progress in their learning and develop as citizens showing our values in everything they do.



As we write this, we are enjoying a great International Day. Children have been celebrating the many cultures which contribute to our community, wearing clothes that reflect their backgrounds and engaging in a range of activities throughout the day. The children have visited different classes and immersed themselves in learning about different countries, their culture and history. We look forward to families joining us

after school for our International Evening celebration where we will join together with food, songs and conversation to mark this special day.



Earlier this week, Nursery donned their listening ears to go on a listening walk to hear the many sounds that we hear day-to-day in our school. From the wind whistling through the trees outside to the gentle hum of learning conversations between children in our classrooms. Our Nursery children discussed

what they could hear and compared the different sorts of sounds they heard along the way.

During our dyslexia assembly, children took a real interest in famous and successful dyslexic people who have made a difference to the world we live in. It is part of the work we do as a school to ensure our environment and practice is dyslexia-friendly and that we challenge stereotypes associated with dyslexia, raising awareness and understanding.

We look forward to seeing everyone at parents' evenings on Tuesday and Thursday next week. Please book your appointment through the online booking system if you have not yet done so. They are crucial in order to forge those close home-school links and share progress of children and discuss their start to the year. The Horn Park Parents' Association will be serving refreshments in the cookery room. Please drop by for a cuppa and to get to know them!

Ms Crosland and Mr Leslie



DATES FOR YOUR DIARY

Class Sharing Assembly: (09.05am)

Beeches - Friday 18th October

Maples - Friday 8th November

Reception to Eltham Library

Cherries: 14th October

Willows: 17th October

Parents Evening

Tues 15th & Thursday 17th October

Half Term

Monday 21st - Friday 25th October

Monday 28th INSET Day (School closed)

Children return to school on Tuesday 29th October

Year 3 trip to Museum of London

Chelsea: Tuesday 5th November

Tower: Thursday 7th November

Year 2 Maritime Museum trip

Friday 8th November

Year 1 trip to Moon Lane Books

Elms: Monday 11th November

Maples: Thursday 14th November

Children in Need

Friday 15th November

THIS WEEKS ATTENDANCE %

School's overall attendance this week was 95.4%. The National expectation for attendance is 96.5%



GOLD

Tower with 98.7%



SILVER

Poplars with 97.8%



BRONZE

Elms with 97.0%

Our Value this month is
Freedom & Tolerance

French phase of the week:

Ca va bein, Merci - I'm well thank you

WHAT HAVE BEECHES BEEN LEARNING THIS TERM?

Beeches have had a fun start to the year and have fitted so much in already! We have thoroughly enjoyed our whole school topic 'Traditional tales'. Our text is Jack and the Beanstalk and we have enjoyed retelling the story in our own way. We also discussed whether Jack was right to steal the golden hen from the giant.



Ayda said 'I think it is not right to steal from people because you will grow up to be a thief'.

Emre said 'I think it was ok because Jack and his mum were poor and very hungry'

In Maths, we have been focusing on place value with the help of Perry the Place Value Robot, to help us partition our numbers into tens and ones. We have also been looking at different methods for addition and subtraction.



Our science topic this term is plants, we have been fortunate enough to investigate the different plants growing in our school garden. We have also learnt how the stem of the plant carries the water to the rest of the plant and we were able to see this with our own eyes by putting food colouring in the water! It turned the petals pink!

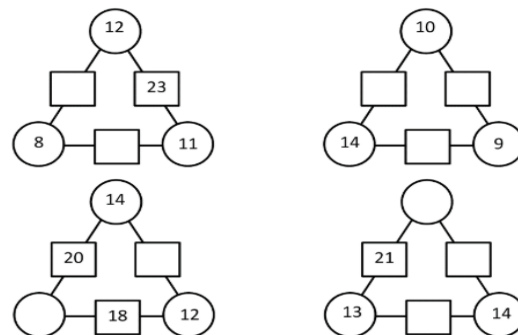
COMPASS NEWS

The Compass Parent Forum has now held it's first meeting of the academic year. Parent representatives from across our seven schools attended the meeting, hosted at Alderwood Primary School. It was also an opportunity for the Parent Forum to visit our new Compass specialist provision – Phoenix Class. Phoenix Class caters for children with complex social, emotional and mental health difficulties, offering intensive time-limited support, with the aim of successfully returning children to their mainstream school. The Parent Forum discussed what information they felt we should provide to parents of children who may be put forward for a place at the specialist provision. In addition to this, we also discussed the 'Inclusion by Design' document, that once published, will offer guidance to staff on meeting the needs of all of our children.



MATHS CHALLENGE

The numbers in the circles added together makes the number in the linking rectangle. Find the missing numbers in this puzzle.



NOTICES

**EVERY
SCHOOL DAY
COUNTS**

A polite reminder, if your child will be absent from school, please contact the office before 9.00am on the day explaining the reason. Where possible, medical appointments should be arranged for after the school day or during school holidays to avoid affecting your child's attendance.



Communications: We use many different forms of communications to send messages to parents; Marvellous Me, Emails, Twitter, text messages and Website. We are trying to be a greener school and print fewer letters, therefore, please make sure the school office has your correct email address and notify us of any changes.

COMPASS NEWS

For latest news on other schools within the Compass, please see the link: <https://compass-partnership.uk/>

CERTIFICATE OF ACHIEVEMENT

Joey - Willows	Scarlet - Chelsea
Shyla - Cherries	Emily - Lambeth
Adchayan - Elms	Lilly - Kew
Charlie - Maples	Angel - Richmond
Lexi - Beeches	Kai - Albert
Freddie - Poplars	Ethan - Westminster
Trey - Tower	Bethany - Blackfriars
Malachi - Sycamore	Shamara - Millennium

Lunch Menu – Week 1



Please remember to follow us on **twitter** @hornparkschool and through your **Marvellous Me** app.

